

# QUALITY-BUILT™

HUBS AND BEARINGS | MOYEUX ET ROULEMENTS | BUJES Y RODAMIENTOS

powered by:



## black series hub assembly

Enhanced Build Specifications

Ultra-Premium Materials

Tighter Internal Tolerances

Enhanced ABS Components

Premium Seals

High-Temperature Bearing Grease

High-Carbon Steel Construction

Roll Form Designs



### Q-SHIELD

Q-Shield hub coating is a corrosion-resistant surface treatment that creates a chemically bonded, 360° barrier of protection from oxidation and corrosion, improving durability and extending service life.



learn more  
en savoir plus  
más información

**QUALITY-BUILT  
TO LAST.**

# QUALITY-BUILT™

HUBS AND BEARINGS | MOYEUX ET ROULEMENTS | BUJES Y RODAMIENTOS

## black series hub assembly



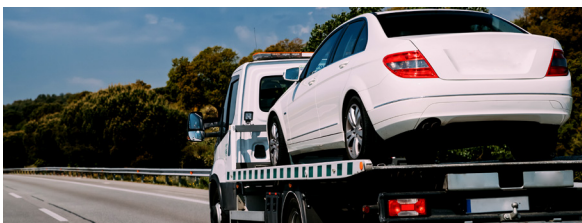
Quality-Built Black Series hub assemblies feature several engineered upgrades, including enhanced hub body designs, premium bearings, and high-temperature grease for improved durability and silent performance. Quality-Built Black Series hub assemblies feature OE design ABS sensors ensuring seamless installation without calibration or adjustment.

**227 Part Numbers and Growing**

**Import and Domestic Applications**

**Covers Approx. 111M Vehicles on the Road**

**Focus on Late Model Passenger Vehicles, Light Duty Trucks & SUVs**



Quality-Built Black Series hub assemblies add value and peace of mind for your customers with complimentary roadside assistance included with every hub unit.



**CALL BEFORE YOU RETURN!**  
**800-228-9672**

ASE Certified Technicians are Standing by 7 days a week

MPA's team of ASE-certified master technicians are trained to resolve installation, diagnostic, and product application questions.

powered by:



**QUALITY-BUILT  
TO LAST.**